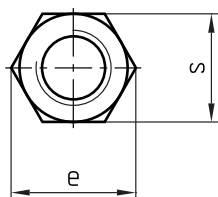
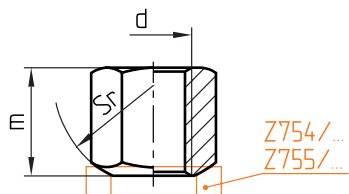


Z281/... (V5410/...)

Mat.: 10.9/1000 N/mm<sup>2</sup>  
DIN 6330

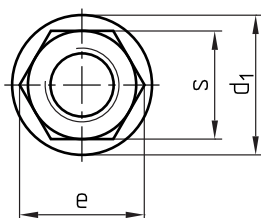
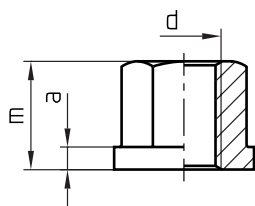


s	e	m	Sr	d	Nr./No.
10	11,5	9	9	<b>M 6</b>	Z281/ 6
13	15	12	12	<b>M 8</b>	8
17	19,6	15	15	<b>M10</b>	10
19	21,9	18	17	<b>M12</b>	12
22	25,4	21	20	<b>M14</b>	14

s	e	m	Sr	d	Nr./No.
24	27,7	24	22	<b>M16</b>	Z281/16
27	31,2	27	24	<b>M18</b>	18
30	34,6	30	27	<b>M20</b>	20
36	41,6	36	32	<b>M24</b>	24
46	53,1	45	41	<b>M30</b>	30

Z282/... (V5420/...)

Mat.: 10.9/1000 N/mm<sup>2</sup>  
DIN 6331



s	e	m	a	d <sub>1</sub>	d	Nr./No.
10	11,5	9	3	14	<b>M 6</b>	Z282/ 6
13	15	12	3,5	18	<b>M 8</b>	8
17	19,6	15	4	22	<b>M10</b>	10
19	21,9	18		25	<b>M12</b>	12
22	25,4	21	4,5	28	<b>M14</b>	14

s	e	m	a	d <sub>1</sub>	d	Nr./No.
24	27,7	24	5	31	<b>M16</b>	Z282/16
27	31,2	27		34	<b>M18</b>	18
30	34,6	30	6	37	<b>M20</b>	20
36	41,6	36		45	<b>M24</b>	24
46	53,1	45	8	58	<b>M30</b>	30